

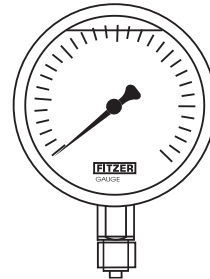
FITZER glycerine filled pressure gauges are ideal. Where pressure gauges are subjected to serve conditions. The filled liquid protects the Internal parts against vibrations and also Lubricates and protects from environmental conditions. Glycerine filled pressure gauges are Installed on Powerpacks, Hydraulic machinery , Pumps, Compressors power plants, Pipelines and Transmission stations where vibration & pulsation are destructive factors.

SPECIFICATIONS :

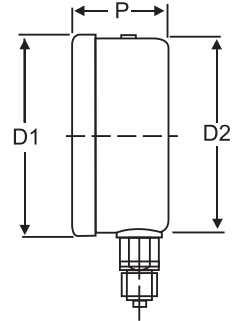
Dial Size	65mm, 100mm, & 150mm
Case & Bezel	SS 304 Crimp type & / Snap Action
Window	Acrylic glass / Safety Glass
Bourdon	Brass Phosphor Bronze / SS 316
Movement	Brass / SS 304 / SS 316
Socket	Brass / SS 316 / SS 316 / Monel
Connection	1/8", 1/4", 3/8", 1/2" / Bsp / BspT / Npt (m)
Range	Pressure up to 1400 Kg/cm ² , vaccum & Compound Ranges.
Joints	SS Argon arc Welded , Phosphor Bronze , Brass Silver Brazed / Soldered.
Mounting	Direct with bottom entry / Direct with back entry Flush Panel With back entry (three Panel / Bracket) Surface with Bottom Entry
Accuracy	±1% And ± 2% Of Full Scale
Available Options	Liquid Damping , Snubber , Gauge , Saver , Syphon And 2way - 3 Way Cock

DIAL SIZE	65mm	100mm	150mm
ØD1	67.5	108	166
ØD2	67.1	98.5	151
ØD3	85	132	186
ØD4(P.C.D.)	75	118	168
D _s	78	122	178
P	Others	33	47
	Surface Mounting	37	51

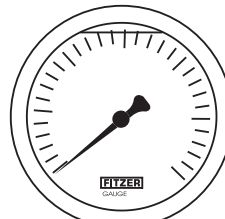
Bottom Connection Direct Mounting



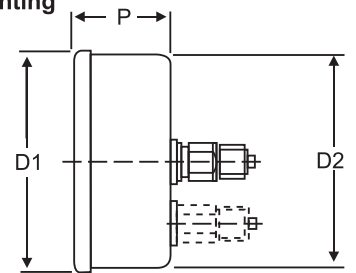
PG-200



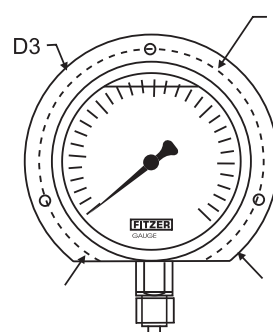
Back Connection Direct Mounting



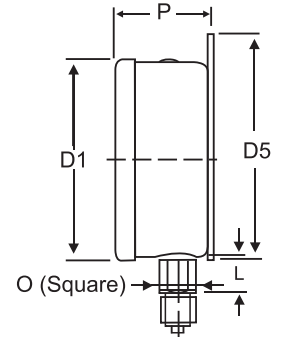
PG-201



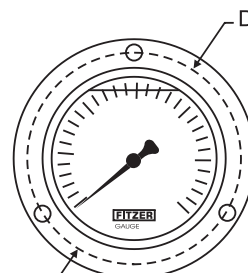
Bottom Connection Surface Mounting



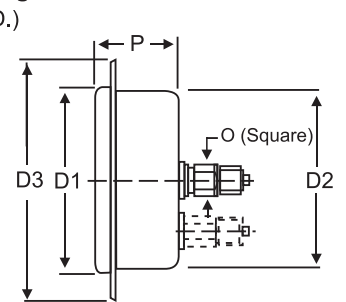
PG-202



Back Connection Panel Mounting



PG-203



Back Connection Bracket Mounting



PG-204

