



**SERIES TW - 300**

**FITZER** make thermowell are to protect the temperature guages from various media, Pressure, viscous material or velocity and abrasives.

A thermowell design permits quick removal and easy filment of thermometer for replacement, repair and testing.

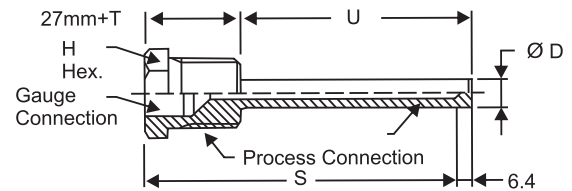
**SPECIFICATIONS :**

<b>Construction Shank Material</b>	<b>Straight, Tapered and Stepped SS 316 / SS 316 L / Monel, Nickel, inconel &amp; other on request.</b>
<b>Bore Dia</b>	<b>7mm, 9mm, 11mm, 13mm other on request.</b>
<b>Standard U Length</b>	<b>190mm, 240mm, 290mm, 340mm, 440mm, 490mm.</b>
<b>Process Connection</b>	<b>1/2", 3/4", 1" NPT &amp; BSP</b>
<b>Instrument Connection</b>	<b>1/2" NPT (F)</b>
<b>Pressure Rating</b>	<b>Tested up to 600 Kg/Cm<sup>2</sup>.</b>
<b>Application</b>	<b>Bi-Metal, Mercury, Gas Filled thermometer &amp; Electronic Sensors</b>

**SPECIFICATIONS :**

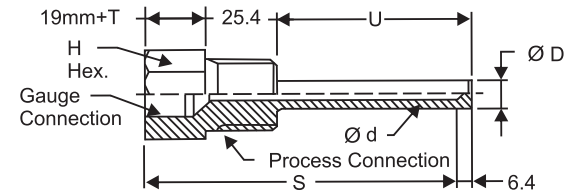
<b>Flange</b>	<b>ASA,ANSI, DIN, JIS or any standard flanges as per requirement.</b>
<b>Flange Material</b>	<b>SS 304 / SS 316 / SS 316 L Hastelloy - C, Monel, Teflon Coating on flanges or other on request</b>
<b>Flange Size</b>	<b>1/2", 1", 1 1/2", 2", 3",with standard 150 to 2500 rating Flanges with RF, FF or any special serration as per client requirement.</b>
<b>Instrument Conn.</b>	<b>1/2" BSP / NPT (F)</b>
<b>Pressure Rating</b>	<b>Tested up to 600 Kg/Cm<sup>2</sup>.</b>
<b>Application</b>	<b>Bi-Metal, Mercury, Gas Filled thermometer &amp; Electronic Sensors</b>

**Straight Configuration**



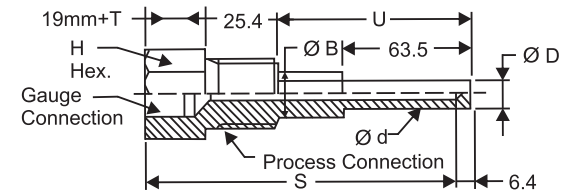
**TW-300**

**Straight Configuration**



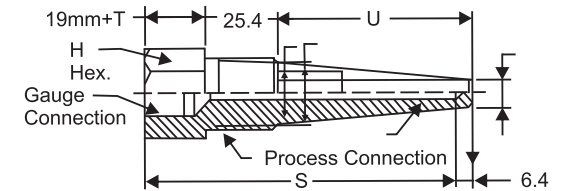
**TW-301**

**Stepped Configuration**



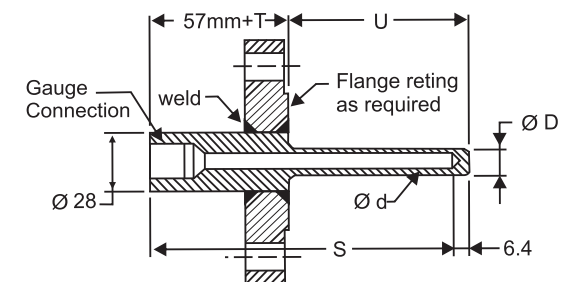
**TW-302**

**Tepered Configuration**



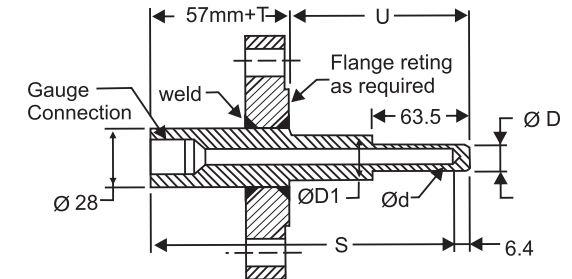
**TW-303**

**Straight Configuration with Flange**



**TW-304**

**Stepped Configuration with Flange**



**TW-305**